

Thank you for purchasing your new pTrumpet. We hope you have many hours of fun. Here are a few things which will help your enjoyment. Please don't forget to register your instrument with us at www.ptrumpet.com/register

Cleaning

pTrumpet is completely made from plastic and very durable and robust to dents and scrapes. To clean the external surfaces, you may use a soft cloth with warm soapy water and dry the instrument with a lint free cloth. We recommend that you clean the instrument before first use, being careful not to get soapy water into the valve system.

Intonation

Like any trumpet, you may find the intonation and harmonic range of pTrumpet different to your own brass trumpet. pTrumpet has a completely consistent bore size throughout the instrument making it very free and easy-blowing. Therefore, we advise against using excessively deep or shallow cup mouthpieces.

Main Tuning Slide

The main tuning slide has two o-rings at the end of the slide tubes. These improve air tightness of the instrument. Two spare o-rings are included with the matching finger buttons.

We recommend that the main tuning slide be placed about 10mm out and then adjusted for performance preference.



Matching Finger Buttons (adjustable)

Whether you want to extend the reach for large hands, reduce the valve block size for small hands, train fingers into the correct position or accentuate a specific valve or combination our matching valve caps give players and teachers the flexibility they need.



With a clever “click in place” design, the center of the caps can be positioned over the piston or offset to create the perfect posture for all fingers over the valves.

As you rotate the caps the perfect position for your hand can be created with each finger adjusted to perfection. Smaller, growing hands

can have constant adjustment, encouraging good posture and reducing tension.

The unique design of the valve cap tops guides the finger pad into a good playing position that is both mechanically efficient and relaxed. The shape of the finger pad cup, valve cap surface and the centered guide hole have all been carefully created to work together to guide the finger without disrupting the player. The touch hole constantly reminds the finger to keep its central, piston style position whilst playing.



Mouthpieces

The pTrumpet includes a plastic 3C and 5C mouthpiece which are based on the traditional Bach internal shapes. You may use any standard brass mouthpiece but we recommend, given the nature of the plastic material, that heavytop style or shallow mouthpiece cups may not balance as well with our instrument.

Removing and Replacing the Valves

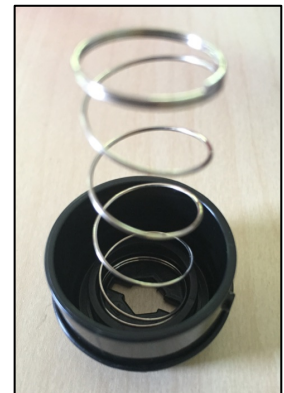
To remove the valves, gently turn the bottom caps anti-clockwise about 10mm. Be careful that the piston does not fall out under its own weight. You may wish to turn the instrument upside down.

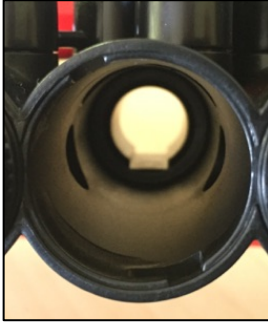


Remove the cap, spring and valve piston.



To replace the piston, place the spring into the bottom cap – the spring will fit snugly inside the bottom cap center-ridge.





Look inside the bottom of the valve block – you will see the key cutout at the top end of the valve block. Turn the piston so that the key shape aligns with the inside key cutout of the valve block.

The piston will not fall into place if it is not aligned correctly. You can replace any piston into any port of the valve block.

Finally, secure the valve bottom cap by pushing upwards into the bottom of the valve block and turning 10mm clockwise.

Right Hand Position

pTrumpet has been designed with the bell section higher than valve casing. This is to ensure that the player uses the correct finger posture with the player's fingertips pushing down each piston. Playing with flat fingers will not be possible – sorry! You can also adjust and customize the position of the fingertips on each individual piston using the Matching Finger Buttons.

Valve System

The valve system is designed to operate without any oil or lubrication. You may use any regular valve oil if you wish, and if you do we recommend it be used sparingly and applied thinly across each piston. You *may* find the application of valve oil or water does not improve valve performance, in which case, clean and dry each piston and the inside of the valve casing thoroughly with a lint free cloth.

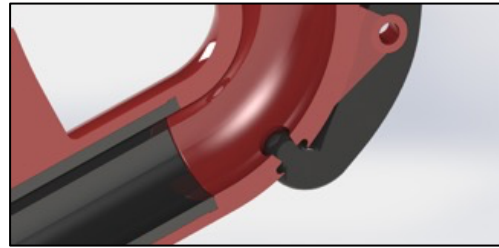
If you find the valves are sticking we recommend the following:

- 1) Remove each piston and clean and dry the piston and inside of the valve casing with a lint free cloth. If you have used oil previously, remove all oil thoroughly from the piston and inside of the valve casing.
- 2) In the early stages of use, some wear of the piston surface is normal and extra cleaning may be needed as the valve system beds in.
- 3) Ensure there is no obstruction or plastic residue inside the valve casing itself, especially around the ports. You can run your fingertips inside the valve casing to feel for any rough edges.
- 4) When playing the pTrumpet hold the valve block with a relaxed left hand as excessive tension in the hand-grip may cause compression of the valve casing and sticking of the valves.

Water Key

It may appear that the water key does not open. This is a characteristic of our design and it does open far enough to allow moisture to drain.

The water key sits flush inside the main tuning slide to ensure a smooth internal surface.



Waterkey Closed



Waterkey Open



If you are concerned the water key does not work here is a simple test. Remove the main tuning slide and fill it full of water.

Then depress the water key and you should see the water drain out.

PLEASE DO NOT file or try to modify the water key to make it open further.

Please don't hesitate to contact us with any further questions or feedback at info@ptrumpet.com or contact your local Conn-Selmer dealer.